



# Outdoor Interactive Wall™



## User Guide

[www.tts-group.co.uk](http://www.tts-group.co.uk)

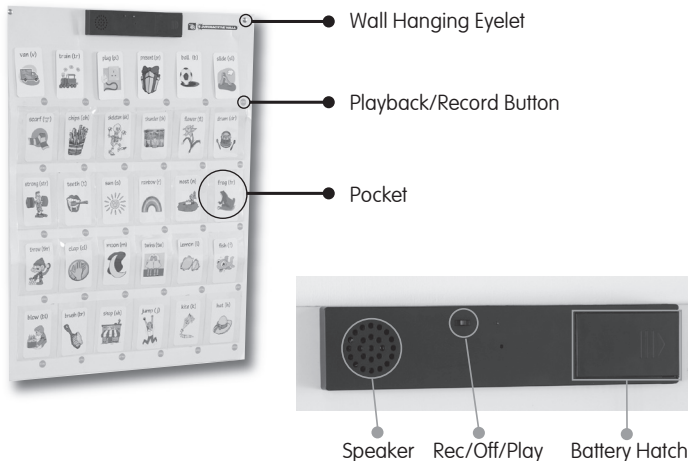


- Please retain the information in this User Guide for future reference.
- Please read all instructions fully before using.
- To clean, wipe the surface with a clean damp cloth.
- Do not allow the product to come into contact with water or any other liquids.
- Keep the product away from direct sunlight and heat.
- If your product malfunctions please switch it off and then back on again to reset it.

## Pack Contents

- Outdoor Interactive Wall
- User guide

## Know Your Product



# Outdoor Interactive Wall™

## Using Your Product

The Interactive Wall Chart has 30 recordable tiles; each tile has up to 30 seconds of record time. Each tile has a hardwearing pocket to allow content to be inserted.

The Interactive Wall Chart has keyholes and eyelets to allow the item to be wall mounted.

### Recording

Slide the Off/Rec/Play switch on the speaker module to Rec.

Choose a 'tile' to record a message into.

Press and hold the Rec button and the play button for the tile you want a message to be recorded into.

Speak clearly into the microphone.

Release the Rec and play buttons. Each Tile can record up to 30 seconds.

Each subsequent message will record over the message before it.

### Playback

Slide the Off/Rec/Play switch on the speaker module of the wall chart to play.

Press a play button once to hear the recorded message.

Move the switch to the 'Off' position when not in use to conserve the batteries

## Battery Precautions

- Batteries are to be inserted with the correct polarity.
- The supply terminals are not to be short circuited.
- Only batteries of equal size and type should be used.
- Non-rechargeable batteries are not to be recharged.

## Replacing Batteries

- Remove the battery hatch cover and carefully remove the batteries and dispose of them responsibly.
- Insert new batteries, ensuring the correct polarity. Replace the battery hatch firmly and accordingly.
- Different types of batteries or new and used batteries are not to be mixed.
- Exhausted batteries are to be removed from the toy.
- This product used 3 X 1.5V AAA batteries (not included)



## Trouble Shooting

Problem	Solution
Interactive Wall Chart will not record sounds	Ensure the slide switch is in record mode. The batteries may need replacing  Ensure that the batteries are fresh, and are inserted correctly.
Interactive Wall Chart will not playback recordings	Ensure the slide switch is in play mode.  Ensure that the batteries are fresh, and are inserted correctly.

## Technical Support

Please visit [www.tts-group.co.uk](http://www.tts-group.co.uk) for the latest product information.

Email [feedback@tts-group.co.uk](mailto:feedback@tts-group.co.uk) for technical support.

TTS Group Ltd.  
Park Lane Business Park  
Kirkby-in-Ashfield  
Nottinghamshire  
NG17 9GU, UK.  
Freephone: 0800 318686 Freefax: 0800 137525

**WARNING:** Do not dispose of this product in household waste.

**WARNING:** Hand it over to a collection point for recycling electronic appliances.

**WARNING:** Not suitable for children under 36 months due to small parts- choking hazard.

Made in China, on behalf of TTS Group Ltd.

TTS Product Code:

**IT10003**



TTS is proud to be part of **RM** plc